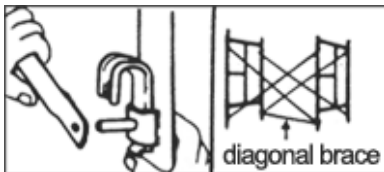
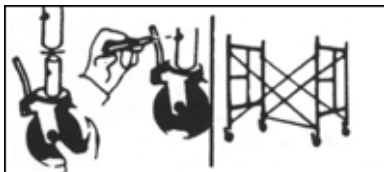



 **How To Erect Rolling Towers and Scaffolding**


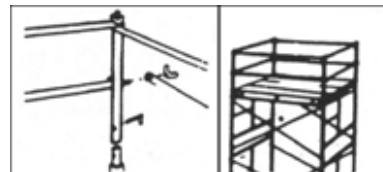
**1. Establish base frames using cross braces secured by drop locks. Connect diagonal brace to frames to start assembly.**



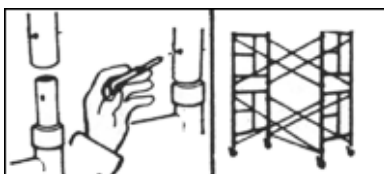
**4. Hook Aluma plank over frame end bars at desired height.**



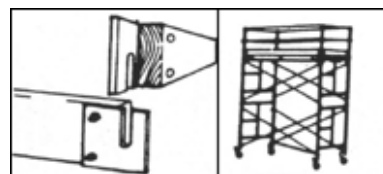
**2. Install casters in legs. Insert and lock toggle pins to continue assembly.**



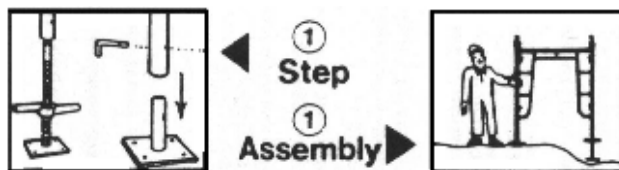
**5. Put in guard rail posts at 4 corners and secure posts to frames with toggle pins, fasten guard rails to post with wing nut.**



**3. Erect upper sections over base frame assembly using coupling pins between frame legs. Secure sections together with toggle pins through coupling pins to continue assembly.**



**6. Interlock toe boards in position on the platform to close in the deck. The complete rolling tower is shown.**



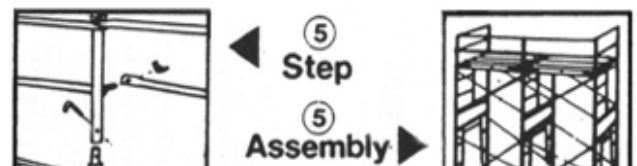
**Connect base plate to frame leg with toggle pin for even surfaces; connect adjustable jack (with base plate) to frame leg for uneven surfaces to start assembly at right. Always use mudsills under plates.**



**Hook Aluma planks over frame end bars at desired heights to continue assembly at right.**

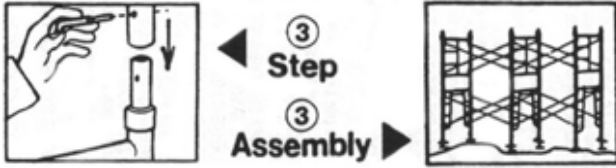


**Establish base frames using cross braces secured by drop locks.**



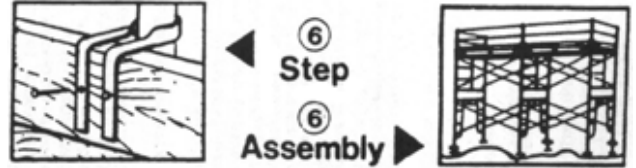
**Put in guard rail posts at corner and mid-section. Secure**

Multiple frames and cross braces continue the assembly at right.



Erect upper sections over base frames using coupling pins between frame legs. Secure sections together with toggle pins through coupling pins to continue assembly at right.

posts to frames with toggle pins. Fasten guard rails to post with wing nuts. To continue 3-sided guard rail assembly at right.



To close in plank deck, on 3 sides, position toe board holders around guard rail posts and nail into 2'x4's or 2'x6's that serve as toe board system. The complete assembly is illustrated to the right.

Tel.:

1-718-589-4900

Address:

1470 Bruckner Blvd  
Bronx, NY 10473

E-mail:

info@colgatescaffold.com

© 2007 Colgate Scaffolding. [Privacy Policy](#) & [Terms of Use](#)